

Service to Trade Since 1999

# Steel Market Info

THE MAGAZINE DEVOTED TO STAINLESS STEEL AND ITS APPLICATIONS स्टील मार्केट इन्फो

# INDIAN

# Stainless

## HOUSEWARE



Distributed perpetually at :



2015

 **SPRING FAIR**  
INTERNATIONAL  
BIRMINGHAM, UK

**ambiente**  
messe frankfurt

 **Gulfood**  
DUBAI

international home  
+housewares show  
2015 | chicago + usa

 **KIDEX**  
Hong Kong  
Houseware Fair 2015

 **中国进出口商品交易会**  
CHINA IMPORT AND EXPORT FAIR

**GIFTEX** 2015  
World  
JAPAN

**House & Gift Fair**  
professional fair for housewares articles  
BRAZIL

 **HouseWare**  
RUSSIA

 **ZuchEx**  
HOUSEWARE & LIFESTYLE  
TURKEY



R. L. Choudhary  
Editor - in - Chief & Publisher

## Editor Desk

### Year

11 (International Issue)

### Editor - in - Chief & Publisher

R. L. Choudhary

### Asst. Editor

Khushboo Choudhary

### Advisor

Hitendra Bhalaria

### Cover Photo

ARTTD'INOX

### Published at

2nd Floor, Nirmal Tower,  
Chopasni Road  
Jodhpur-342003 (Rajasthan)

### Office Tel

+91-291-2441514

### Fax:

+91-291-2632533

### Cell:

+91-9314713809

### E-mail:

info@steelmarketinfo.com

### Website:

www.steelmarketinfo.com

### Layout Design

M. Asad

### Cover Page

Steel Market Info

### Printed by

M/s. Daga Printers, Inside Nagori Gate,  
Jodhpur, Tel: +91-291-2548513

## DISCLAIMER

Material Presented in this publication has been prepared for general information of the reader and in some instances is reproduced from information supplied by various agencies whilst all care is taken in the compilation of this publication neither steel market info nor any of its members, agents or servants accept responsibility for the contents.

# INDIAN STAINLESS STEEL HOUSEWARE is Bouncing Leaps in Production – Exports

Dear Importer,

On account of availability of raw material, skilled and cheap labour and government incentives, today China and India are the largest and leading exporter of Stainless Steel Houseware products. Both of these countries are in position to provide any product in desired quantum at highly competitive prices. In the past few years, these countries have further strengthened their foothold in the global market through their consistent innovation, designs and applications. Undoubtedly, many big names and brands in the field have succeeded in retaining their recognition and reputation through the products on India and China.

The increasing share of India's Stainless Steel Houseware exports can be identified by the fact that India has the maximum number of stalls after China in every global trade show. And this is the indication of growing understanding among the Indian manufacturers & exporters of India about the global market, which has motivated them to adopt new technologies and strengthen their infrastructure. This is the reason that many well known brands from around the world have outsourced their businesses to Indian exporters and have established their buying offices in India.

China, which has been able to provide the products on competitive price in larger quantities till now only because of the incentives to the industry by the government there, is today reeling under the apprehension of withdrawal of these incentives in next one year. India, in such a position, stands better prospects for the manufacturers and exporters of India to further strengthen its position in International market and excel China..

STEEL MARKET INFO is going to organise its 5th Indian Stainless Steel Houseware Show 2015, a milestone in promotion of Indian Stainless Steel Houseware industry, which is now all set to establish India as a hub of Stainless Steel Houseware products, where the global buyers have an opportunity to source the products of their interest at competitive prices and unmatched quality and variety.

Thank you





**“ A GOVT. RECOGNISED EXPORT HOUSE ”**

**MANUFACTURER & EXPORTER OF**

**All Type of Kitchenware such a Stock Pot, Colander, Bar Accessories Etc.  
Cookware Set, Pet Products, Plastic & SS Hotpots And Many More...**



Admin. Office:

118, Vasan Udyog Bhavan,  
Sun Mill Compound,  
Off. Phonex Mill, Lower Parel,  
Mumbai - 400013 (INDIA)

**Contact Details**

**Mr. Mahipal Jain**

Phone: +91-22-24901200/3600 - 24911200

Mobile : +91 9821352976 Fax : + 91-22 2490 3131

Email: mahipal@kloud9interanational.com

Website :- www.kloud9interantional.com

www.kitchenware-cutlery.com

See Company Profile on Page **28**



**KLOUD 9**

**INTERNATIONAL**



**GRIND  
MASTER**

Absolute Engineering

**YOUR COMMITTED PARTNER  
FOR BUFFING & POLISHING OF  
COOKWARE SINCE 1984**



**HIGH VOLUME COOKWARE POLISHING MACHINE**

- The complete range of Machines for Pressure cookers, SS-Pots, Nonstick, Hard Anodized, Water filter, Tiffin Box, Grinder Bowls, Plates, Lids, Sandwich bottom, etc...
- Fully Automatic Rotary Indexing Machine to Semiautomatic simple to operate, DB-400 Models to compact & high volume Tiffin Box Polishing

**Over 500 Machines installed worldwide for:**

- External & Internal Bright Finishing
- Internal Sunray Finishing
- Edge Facing & Rounding
- Oval Cutting
- External Base Grooving
- Lids / Plates Buffing

Some of our Valued Customers



Grind Master believes in exceeding customer expectations with Innovative and Trustworthy solutions created with Passion and Expertise.

Unarguably the widest Range of Microfinishing, Grinding, Polishing and Deburring Machines in the world !



Grind Master Machines Pvt. Ltd.

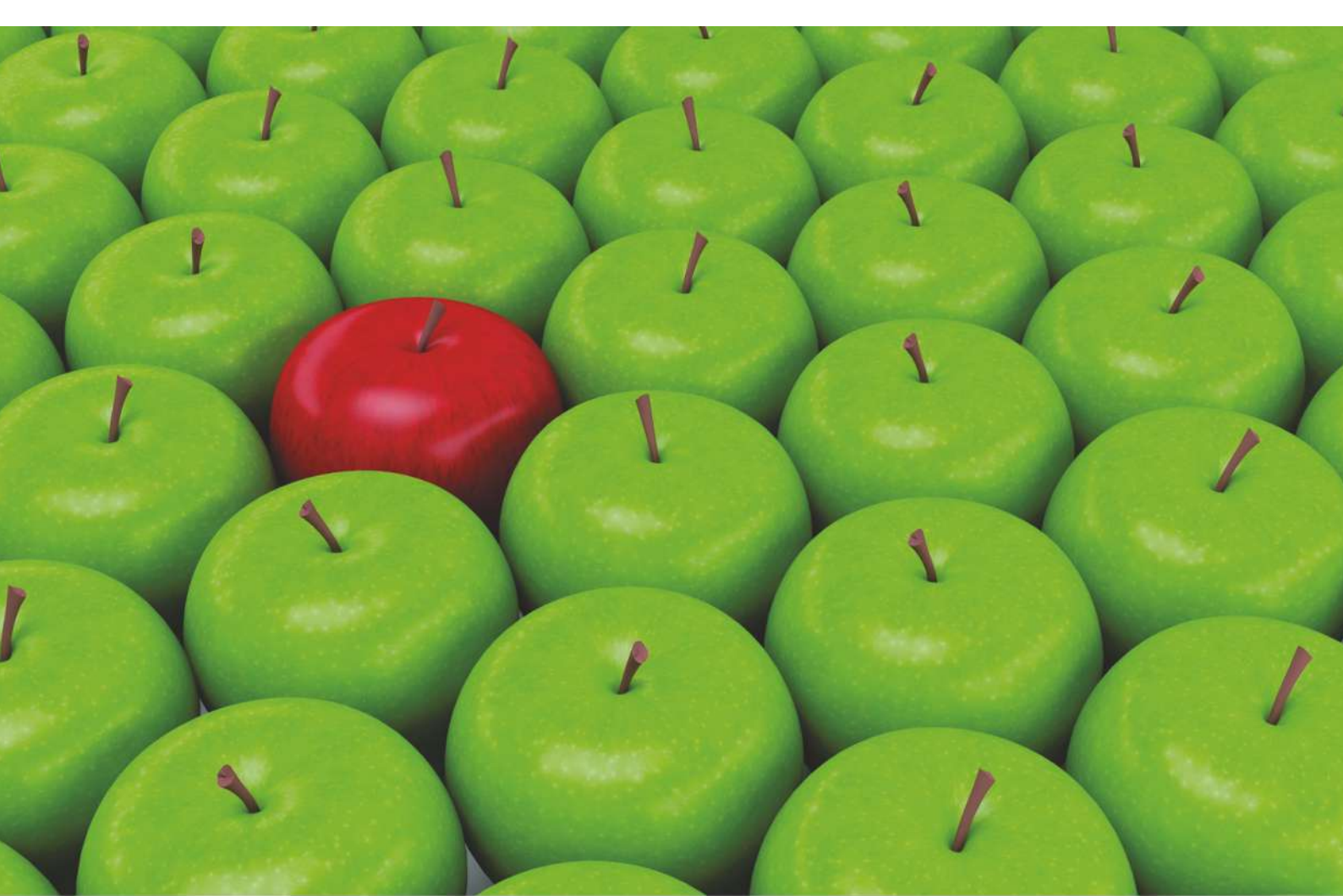
✉ :sales@grindmaster.co.in

☎ :+91 (240) 2374104 / 2374114

[www.grindmaster.co.in](http://www.grindmaster.co.in)

**MICROFINISHING | DEBURRING | METALFINISHING | AUTOMATION**





**Tableware**

**Kitchenware**

**Cookware**

**Serveware**

**Barware**

**Giftware**

**Flatware & Cutlery**

**Bowls**

**Professional Cookware**

**Serving Tools**

**Cocktail Shakers**

**Cups, Mugs & Pots**

**Bakeware**

**Barware Accessories**

**Canisters**

**Kitchen Accessories**

**Colanders**

**Pans & Trays**



[www.seebagroup.com](http://www.seebagroup.com)



Head Office: 11/43 Yeshwant Nagar, Goregaon West, Mumbai – 400 062, MH, India.  
T: +91 (0)22-2872 2880 | F: +91 (0)22-2872 7152 | E: [contact@seebagroup.com](mailto:contact@seebagroup.com)

See Company Profile on Page **28**

# SHREE VALLABH METALS

(A Government Of India Recognised Export House)

(An ISO 9001 : 2008 Certified Company)

Manufacture & Exporters of  
Stainless Steel Houseware, Kitchenware & Cutlery Products

PLATERS



CHAFING DISHES



WINE BUCKETS



BASKETS



STOCK POTS



COOKWARES



BUCKETS



KITCHEN TOOLS



## Our Brand



MEGA MAX™

KITCHEN TOY™

### Registered Office :-

17/21, Dr. A.M.Road, Bhonabhai Chawl, Bhuleshwar, Mumbai - 400002. India.  
Tel : 00-91-22-22403343, Fax : 00-91-22-22413492 / 00-91-22-28150602

### Administrator Office & Factory :-

Shree Ganesh Industrial Estate, H.P. Godown Gally, Gala No. 5 To 8,  
Opp. Old Syndicate Bank, Bhayandar (East), Dist: Thane. Tel.: 00 91 022- 2815 0407 / 2815 0304.  
Email : bhavesh@shreevallabh.co.in, dhaval@shreevallabhmetals.com  
Website : www.shreevallabh.co.in, www.shreevallabhmetals.com, www.neelkanth.net  
www.facebook.com/shreevallabhmetal

**Complete Solution to all your requirements**

**Please Visit us at : Ambiente 2015 in Hall No. 10.3 – Stall C-12**



Safe, Stylish & Superior Range of

# LiteX<sup>TM</sup>

Pressure **Cooker**

Anything,  
But Different



खाना बनाये  
चुटकी मे...



**GALAXY** Kitchen Appliances

Rajkot. (Gujarat) INDIA | E : info@litexindia.com  
W : www.litexindia.com | M : 099252 20772 | 098256 20772



*First time in India  
introducing PNB cookware*

**Best  
Cookware  
Awards**



*PNB* **COOK N SERVE**



*PNB* **FRY PAN**



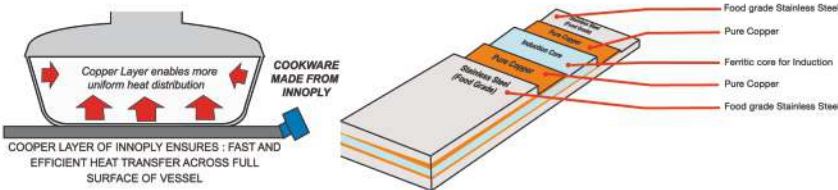
*PNB* **SAUCE PAN**



*PNB* **KARAHI**



**ASSEMBLED WITH SPECIAL SILICON HANDLES FOR EASY GRIP AND HEAT RESISTANCE**



*Shweta Tiwari*  
(Brand Ambassador)

*"Not only I recommend the product because I am The Brand Ambassador for the company, but the product is an excellent combination of quality and value"*

**SHREE SHAKTI ENTERPRISES PVT.LTD.**

Plot No.72, Phase-IV, Sector-57, HSIIDC, Kundli, District Sonapat, Haryana - 131028

Phone:0130-2219960/61/62 Telefax: 0130-2219963 Fax: 0091-130-2219964

Email: info@pnbutensils.com

FOR OEM/CORPORATE ENQUIRY : 9311830050

FOR DISTRIBUTION & EXPORTS : 9311010996



*Let's Choose Things Better*

See Company Profile on Page **30**



Mfrs & Exporter  
of Exclusive  
Bath & Bar  
Accessories



Bar  
Accessories



Bath  
Accessories



Bathroom  
Accessories



Kitchen  
Accessories



Barware  
Accessories

[www.saminternational.co.in](http://www.saminternational.co.in)  
[www.sghome.in](http://www.sghome.in)

**SAM INTERNATIONAL**  
A-24, Pul Pehladpur, Suraj Kund Road,  
New Delhi - 110044  
Tel.: 011-26361220, 26366030, 65569312  
Fax No.: 011-66173941  
Toll free no.: 1-800-11-6030  
Email: [info@saminternational.co.in](mailto:info@saminternational.co.in)

See Company Profile on Page **29**



# BHALARIA

*if you can draw it, we can make it*



## WHY BHALARIA?

- Advantage of wide and varied machineries and capability for different product range operations
- Consistent Quality
- 6500 Product Range to Offer, 500 OEM Products
- Service - small orders are also catered
- 100 products in one container can be shipped
- 9 times Export Excellence Award Winner from Govt.
- 14 times Design Award Winner
- Relationship Management, Value Partnership The Thoughts - of Bhalaria Team

See Company Profile on Page **32**





# BHALARIA

*if you can draw it, we can make it*



## BHALARIA METAL CRAFT PVT. LTD.

Bhalaria Rd , Opp. Hindu Shmashan, Bhayander (W), Mumbai. Dist. Thane, Maharashtra 401 101, India Tel : (91-22) 2819 8234, 2819 8226,  
Fax : (91-22) 2819 8227, 2625 6526, E-mail : sale@bhalariametal.com, exports@bhalariametal.com, Website : www.bhalaria.com , www.bhalariametal.com





# PARKASH



## Largest Manufacturer of Best Quality Deep Drawing Presses in India



### MECHANICAL CLUTCH Deep Drawing Presses

Hi-Rigidity

- Low-maintenance
- Good Metallurgy
- Noise-Less



### PNEUMATIC CLUTCH Deep Drawing Presses

Hand safety  
curtain

- Easy to operate

## Introducing First Time In India CNC Zig-Zag Blanking Line (Fully Automatic)



### Salient Features

- Zig-Zag decoiler (NC Hydraulic)
- Scrap chopper
- Fully CNC controlled panel
- Easy to Operate
- Less power consumption
- Less Space Requirement
- High Production
- Rigid "H" Type Ring Frame Press
- All Parts Oil Dip Running



Find us on [YouTube](#) [Zigzag Blanking India](#)

## SHARMA MACHINE TOOLS

(An ISO 9002 Company)

CB-164, Ring Road, Naraina, New Delhi-110028 (INDIA)  
Tel.: +91-11-25778063, 25778220  
E-mail : sharmapresses@gmail.com  
Web.: www.smtparkash.in

Contact- Neeraj Sharma: +91-9811033616 Chandan Sharma: +91-9810550110





# PARKASH



## Introducing First Time in INDIA

### Cutting - Turning - Beading Machine (Fully Automatic)



#### Salient Features

- ➔ **All Hydraulic Controls**  
(No pneumatic / air connection required)
- ➔ **All Linear motion guide ways**  
(No casting slide ways)
- ➔ **PLC & VFD Control panel**  
(Easy & fast operation)
- ➔ **Two axis beading operation**  
(Most suitable for draw bead components)
- ➔ **Skilled Labour not required for operation.**
- ➔ **Less space required**
- ➔ **Consistent Quality.**

Model No. CTB 450

 **Cutting - Turning - Beading Machine**

**SHARMA MACHINE TOOLS**  
(An ISO 9002 Company)

CB-164, Ring Road, Naraina, New Delhi-110028 (INDIA)  
Tel.: +91-11-25778063, 25778220  
E-mail : sharmapresses@gmail.com  
Web : www.smtparkash.in

Contact- Neeraj Sharma: +91-9811033616 Chandan Sharma: +91-9810550110



*High Quality Stainless Steel Products*

*More Products at: [www.cswpl.com](http://www.cswpl.com)*



## **CHANDA STEEL WORKS PVT. LTD.**

*Manufacturer & Exporter of Stainless Steel Houseware, Petware & Flatware*

See Company Profile on Page **31**

**B-64/2, Wazirpur Indl. Area  
New Delhi-110052 (India)  
Tel: +91-11-27375408/42475251  
Fax: +91-11-27375409**

**Satish Jain ([satish@cswpl.com](mailto:satish@cswpl.com))  
Sidharth Jain ([sidharth@cswpl.com](mailto:sidharth@cswpl.com))**



www.mosaichouseware.com

more than thousand of product designs to choose from...



**Nextgen of**  
houseware products

*Quality to excellence...*

Colander



Design : Mfresh Design Studio  
0 981 838 2054

Cookware



Mixing Bowl



Lid Bowl



Bar Set



Spoon Rest



Butter Dish



Tray



Ash Tray



Water Pitcher



**MOSAIC HOUSEWARE PVT. LTD**

E-53, Sector-4, Bawana Industrial Area, Delhi-110039, INDIA, Email: info@mosaichouseware.com

Tel: 011-27762594, +91 98101 35003

See Company Profile on Page **30**



# INDIAN Stainless Steel Houseware Show

**12 13 14**  
**JULY 2015**

**CHENNAI  
INDIA**  
Chennai Trade Center, Tamilnadu

Organized & Promoted by:  
**Steel Market Info**  
THE MAGAZINE DEVOTED TO STAINLESS STEEL AND ITS APPLICATIONS स्टील मार्केट इन्फो

## SHOW ATTRACTION

Carpet Area:  
**10,000 sqmt.**

Exhibitors :  
**200**

Invited Trade Visitors :  
**25,000**

Inauguration  
12th July, 2015

Award Night  
Ceremony  
13th July, 2015

Closing Ceremon  
14th July, 2015

### INDIAN MARKET OVERVIEW

- Population - 121 Crores
- below 35 years of age. - 65%
- Families - 20 Crores
- Healthy GDP growth - 6.1 % p.a.
- Total Cities - 500
- Metro Cities - 36
- S.S. Production - 30 Lacs tpa
- Consumption in S.S. Houseware mfr. - 60% to 65%
- S.S. Houseware mfr. - 3000
- Exporters - 300
- Traders / Retailer / Wholesalers - 2 Lacs
- Hotel & Restaurant (Using S.S. Product) - 1.5 Lacs
- Buying Agent/ buying house - 50
- Large working population and families with multiple earning members.
- Increasing spends on lifestyle, décor and home improvement products.

### EXHIBITORS PROFILE

- › Utensils
- › Kitchenware
- › Kitchen tool & Cutlery
- › Restaurant & Hotel ware
- › Tableware
- › Petware
- › Cookware
- › Gift Items
- › Furniture
- › Raw Materials
- › Machinery & Accessories
- › Pipe & Tube

### VISITORS PROFILE

- › Manufacturers
- › Exporters
- › Traders
- › Distributors
- › Buying House
- › Retailers
- › Suppliers
- › Hotel & Restaurant Owners
- › Corporate
- › Hospitalities
- › Pipe Fabricator

## WHY YOU VISIT OR EXHIBIT THIS EXHIBITION ?

to your right gateway to  
rapidly growing Indian  
Stainless Steel  
Houseware Market.

Golden Oportunity for  
sourcing Indian  
Stainless Steel  
Houseware Market



# WHY THIS SHOW IN CHENNAI ?

## GEOGRAPHY

CHENNAI, is the capital city of the Indian state of Tamil Nadu. Located on the Coromandel Coast off the Bay of Bengal. Its average elevation is around 6.7 metres (22ft) mean sea-level and its highest point is 60 m (200ft). Two major rivers flow through Chennai, the Cooum River (or Koovam) through the centre and the Adyar River to the south. Total area of the district is 178.20 sq. kms., It stretches nearly 25.60 kms. It is also one of the most important industrial cities of the sub-continent. As a district of the State it ranks third after Coimbatore

## ECONOMY

Chennai's economy has a broad industrial base in the automobile, computer, technology, hardware manufacturing and healthcare sectors. As of 2012, the city is India's second largest exporter of information technology (IT) and business process outsourcing (BPO) services. A major part of India's automobile industry is based in and around the city thus earning it the nickname "Detroit of India". It is known as the Cultural Capital of South India and is the most visited city in India by international tourists according to Euromonitor. The city also serves as the location of the Madras Stock Exchange and the secondary financial hub in India following Mumbai. Industrialisation in the city dates back to the 16th century, when textile mills manufactured goods which were exported to British during its war with France. According to Forbes magazine, Chennai is one of the fastest growing cities in the world and is rated in the "Forbes-Top 10 Fastest Growing Cities in the World". It is ranked 4th in hosting the maximum number of Fortune 500 companies of India, next only to Mumbai, Delhi and Kolkata. It also is home to 24 Indian companies having a net worth of more than US\$1 billion. As of 2012, the city has about 34,260 identified companies in its 15 zones, of which 5,196 companies have a paid-up capital of over INR 50 lakh

## BUSINESS

It is the biggest industrial and commercial centre in South India, and a major cultural, economic and educational centre. Chennai is known as the "Detroit of India" for its automobile industry. Chennai is the fifth-largest city and fourth-most populous metropolitan area in the country and 31st-largest urban area in the world. As a growing metropolitan city in a developing country,

## PORT

The city is served by two major ports, Chennai Port is the second largest ports in India, and Ennore Port. The Chennai port is the largest in Bay of Bengal, with an annual cargo tonnage of 6.146 crore (2010-2011), and second largest containerise hub in India, with an annual container volume of 15.23 lakh TEUs (2010-2011). The port handles transportation of automobiles, motorcycles and general industrial cargo. The Ennore Port with an annual cargo tonnage of 1.101 crore (2010-2011) handles cargo such as coal, ore and other bulk and rock mineral products.

Chennai is the economic capital of India, stands out in terms of stainless steel market. It is a business playground for about 2000 industrialists and traders who come from the sectors S.S Coil, Sheet, Wire, Pipe & Tube, Bar & Rod, Fittings and Fabrication etc. All the major producers of stainless steel have their offices and outlets in Chennai. Apart from it about 600 manufacturers of stainless steel house wares, cookware, cutlery, kitchen tool, sink and hardware have their factories in Chennai and nearby. More than 2000 retailers and wholesalers have their shops in Chennai. About 50-60 stainless steel houseware exporters export their products. It is also a trading hub of stainless steel patta-patti which mainly come from Jodhpur, Ahemdabad and Mumbai. There are prominent associations of Stainless Steel Industries.



CHENNAI Population  
**82,790** approx  
in 2011

CHENNAI PORT  
is the **2nd Largest**  
Port in India

# Snaps of 4th Indian Stainless Steel Houseware Show 2014



for more detail: [www.inoxhousewareshow.com](http://www.inoxhousewareshow.com)





STAINLESS STEEL

## PURAN MAKER BOWLS With Stainless Steel 5 Jalis



[www.komalsteel.com](http://www.komalsteel.com)

Mfgd. & Marketed by

**KOMAL TRADING CORPORATION**

B/12 Vaishali Industrial Estate, B.T. Road, Dahisar (W), Mumbai-400 068.

Tel: +91-22-22223333, Fax: 28926188, Mob: + 919820087177

E-mail: [komal@vsnl.com](mailto:komal@vsnl.com) / [komal@mtnl.net.in](mailto:komal@mtnl.net.in) /

[tekchandbheda@gmail.com](mailto:tekchandbheda@gmail.com) Website: [www.komalsteel.com](http://www.komalsteel.com)

See Company Profile on Page **29**





STAINLESS STEEL

# OIL DISPENSER

[www.komalsteel.com](http://www.komalsteel.com)



Easy to Open



Easy to Fill



Easy to Pour



Easy to Clean



Mfgd. & Marketed by

**KOMAL TRADING CORPORATION**

B/12 Vaishali Industrial Estate, B.T. Road, Dahisar (W), Mumbai-400 068.

Tel: +91-22-22223333, Fax: 28926188, Mob: + 919820087177

E-mail: [komal@vsnl.com](mailto:komal@vsnl.com) / [komal@mtnl.net.in](mailto:komal@mtnl.net.in) /

[tekchandbheda@gmail.com](mailto:tekchandbheda@gmail.com) Website: [www.komalsteel.com](http://www.komalsteel.com)

**Available Size**

**350 | 500 | 750 | 1000 ml.**

**MADE IN INDIA**



15th international specialized exhibition

# HOUSEHOLD EXPO

TABLEWARE • HOUSEWARES • INTERIOR



**ALL  
YOU NEED  
AT HOME**

TABLEWARE, KITCHEN

HOUSEHOLD GOODS

HOME APPLIANCES

LIGHTING, TEXTILE

Organizers:  
LLC «MOKKA Expo Group»,  
Group of Companies Mayer J. Group.  
Yuzhnoportovaya st., 7, bld. 1, 115093 Moscow, Russia  
Tel.: +7 (495) 363-50-32/33  
[www.hhexpo.ru](http://www.hhexpo.ru)

**3-5 MARCH  
SPRING 2015**

**Moscow, IEC Crocus Expo**



# international home + housewares show

# 2015

2,100 exhibitors from over  
40 countries

60,000 professional attendees  
from over 120 countries



Source from leading housewares manufacturers and suppliers worldwide – innovative new products not yet available at European or Asian shows.

Profit from inspiring ideas and qualified partnerships – first-class learning and networking opportunities for both independent specialty retailers and corporate buyers.

**7 - 10 March**  
**Chicago, USA**

Show information and free online pre-registration

Visitors: [www.housewares.org/attend](http://www.housewares.org/attend)

Exhibitors: [www.housewares.org/exhibit](http://www.housewares.org/exhibit)



[www.housewares.org/networking](http://www.housewares.org/networking)



INTERNATIONAL HOUSEWARES ASSOCIATION®  
the home authority



International Specialized Trade Fair

# HOUSEWARE EXPO



March 16-19, 2015 / September 22-25, 2015

Russia, Moscow  
GOSTINY DVOR Exhibition Complex



**HOUSEWARE EXPO - THE RIGHT WAY TO SELL IN RUSSIA AND THE CIS!**

Organized by **GIFTS EXPO**

Under the patronage of the Moscow Government

Under the support of: the Moscow Chamber of Commerce and Industry;  
Gifts, Houseware and Costume Jewellery Manufacturers and Suppliers Association.

Tel.: +7 (495) 729-31-38, +7 (495) 972-48-31  
expo@houseware-expo.com www.houseware-expo.com



Tuyap Exhibition Center - Opening Hours : 09:30 -19:00 Buyukcekmece - Istanbul / TURKEY



Address of **Innovation**

# 10. International Housewares & Gift Fair Istanbul

## Product Groups

- Housewares
- Tableware
- Glassware
- Cutlery
- Decorative Items
- Plastics
- Giftware
- Electrical Appliances
- Bathroom & Kitchen Accessories

Your one stop  
sourcing destination for a wide  
variety of **Houseware, Decoratives &  
Home Accessories from India**



Household Products & Accessories | Home Decoratives | Kitchenware | Tableware | Bathroom Accessories | Lawns & Garden



For more information, please contact:

**Export Promotion Council for Handicrafts**

Tel: 011-26130692, 26135256 Fax: 011-26135518/19

E-mail: [homeexpo@epch.com](mailto:homeexpo@epch.com)

[www.epch.in](http://www.epch.in)

Interact with us at:



[epchindia](http://epchindia.com)

Toll Free: 1-888-664-8664 USA & Canada

REGISTER ONLINE

[www.epch.in/hei](http://www.epch.in/hei)



**6th Indian Houseware and Decoratives Show**

**16 – 18 April, 2015**

India Expo Centre & Mart,  
Greater Noida Expressway, New Delhi





# Asia's biggest houseware event



**Reserve your FREE admission badge!**

Web: [www.hktdc.com/ex/hkhousewarefair/03](http://www.hktdc.com/ex/hkhousewarefair/03)

Wap: [hktdc.com/wap/houseware/T119](http://hktdc.com/wap/houseware/T119)

App: HKTDC MOBILE

Tel: (852) 1830 668 • Fax: (852) 2824 0026

Email: [exhibitions@hktdc.org](mailto:exhibitions@hktdc.org)



**Hotel  
Sponsorship  
for first-time  
buyers**



# Japan's Leading Trade Fairs

## 60,000\* visitors from 55\* countries/regions! (\*expected)

Held inside **GIFTEX 2015**

# 6th TABLEWARE EXPO



# 4th KITCHENWARE EXPO



Dates: July 8 [Wed] – 10 [Fri], 2015

Venue: Tokyo Big Sight, Japan

Organised by: Reed Exhibitions Japan Ltd.

**BOOK YOUR SPACE NOW** >>> TABLEWARE EXPO: [www.tw-expo.jp/en/](http://www.tw-expo.jp/en/)  
KITCHENWARE EXPO: [www.kw-expo.jp/en/](http://www.kw-expo.jp/en/)

Organised by



**TABLEWARE/KITCHENWARE EXPO Show Management, Reed Exhibitions Japan Ltd.**

18F Shinjuku-Nomura Bldg., 1-26-2 Nishishinjuku, Shinjuku-ku, Tokyo 163-0570, Japan  
TEL: +81-3-3349-8519 FAX: +81-3-3349-8530 E-mail: [tw-english@reedexpo.co.jp](mailto:tw-english@reedexpo.co.jp)  
A division of Reed Business Registered in England, Number 678540

**[INDIA] Reed Exhibitions ISG**

Contact: Shammi Srivastava (Mr.)  
TEL: +91-2267716617  
E-mail: [shammi.srivastava@reedexpo.co.uk](mailto:shammi.srivastava@reedexpo.co.uk)





**TRENDS**  
**fashion**  
**DESIGN**

SÃO PAULO • BRAZIL

EXPO CENTER NORTE

|                        |        |        |         |
|------------------------|--------|--------|---------|
| 15                     | 16     | 17     | 18      |
| Saturday               | Sunday | Monday | Tuesday |
| time: 9 a.m. to 7 p.m. |        |        |         |

**15 to 18**  
**AUGUST**  
**2015**

## All year generating businesses.

One of the best options that generates media integration, face to face, between manufacturers, distributors, importers and their main buyers.



## CONTACT

Phone: +55 (11) 2105.7000

[sales@grafitefeiras.com.br](mailto:sales@grafitefeiras.com.br)  
[www.grafitefeiras.com.br](http://www.grafitefeiras.com.br)

Promotion



Support



Social Activities



Venue



Member



Registration closes at 3pm on August 18<sup>th</sup>.

This material is subject to alterations with no previous notice. The visitor exempts Grafite Feiras e Promoções from liability for any defects or flaws caused by exhibitors and other service providers.

## KLOUD 9 INTERNATIONAL



|                       |   |
|-----------------------|---|
| Contact Person        | : Mr. MAHIPAL N. JAIN   |
| Name of Company       | : <b>KLOUD 9 INTERNATIONAL</b><br>(A Govt. Recognised Export House)   |
| Year of Established   | : 2005  |
| Type of Company       | : PROPRIETOR  |
| Workers Team          | : 40-50   |
| Nature of Business    | : Export & Import   |
| Main Product Lines    | : Stainless Steel Utensils  |
| Average Annual Export | : 40-50 CR.   |
| Main Export Market    | : USA, EUROPE, AFRICA, FAR EAST, GULF   |
| Postal Address        | : 118, Vasan Udyog Bhavan,<br>Sun Mill Compound,<br>Opp. High Street Phoenix,<br>Lower Parel, MUMBAI - 400013 |
| Telephone No.         | : +91-22-24901200 / 3600  |
| Fax No.               | : +91-22-24903131   |
| Mobile                | : +91-9820776503 (Mr. Mahipal Jain)   |
| E-Mail                | : mahipal@kloud9international.com   |
| Website               | : www.kloud9international.com<br>www.kitchenware-cutlery.com  |

## GRIND MASTER MACHINE PVT. LTD.

|   |  |
|---|--|
| Contact Person  | : <b>MRS. MOHINI KELKAR</b>  |
| Name of Company   | : <b>GRIND MASTER MACHINE PVT. LTD.</b>  |
| Year of Established   | : 1984   |
| Type of Company   | : Manufacturing Polishing Machine  |
| Workers Team  | : 200  |
| Nature of Business  | : Manufacturing Machines   |
| Main Product Lines  | :  |
| <b>1. Cookware Polishing Machines</b> – Complete range for External & Internal Finishing of Pressure Cooker Sauce Pans, Lids, Dabba etc...<br><b>2. Descaling Machines</b> of Wire Rods & Bright Bars<br><b>3. Belt Grinding Machines</b> of Angles, Flats, Square bars<br><b>4. Round Tube Polishing Machines</b> – widest range of Centreless machines for bright and hairline finishing – multi head machines with Abrasive belts or wheels – for dry & wet finishing.<br><b>5. Square Tube Polishing Machines</b> – multi head machines for bright and hairline finishing.<br><b>6. Tube Notching Machines</b><br><b>7. Coil to coil &amp; Sheet Finishing Machines</b> – for No.4 Hairline, duplo & brushed finish – dry & wet |  |
| Average Annual Export   | : 50% of Total Production  |
| Main Export Market  | : China, Middle East, South East Asia, Europe  |
| Business Award  | : SME of the year award in the<br>Emerging India Awards by ICICI &<br>CNBC Powered by Crisil – Dec. 2014 |
| ISO Certify   | : Yes  |
| Postal Address  | : B-10/11/14, Midc, Near Railway Station,<br>Aurangabad - 431005   |
| Telephone No.   | : 0091 240 2374104   |
| Fax No.   | : 0091 240 2376205   |
| Mobile  | : 0091 9049998311  |
| E-Mail  | : sales@grindmaster.co.in  |
| Website   | : www.grindmaster.co.in  |



## SEEBAGROUP



|                     |  |
|---------------------|--|
| Contact Person      | : <b>Anand Baldawa</b>   |
| Name of Company     | : <b>SEEBAGROUP</b>  |
| Year of Established | : 1986   |
| Type of Company     | : Private Limited  |
| Workers Team        | : 50   |
| Nature of Business  | : Design, Manufacture and Export of Premium Quality Stainless Steel Houseware Products   |
| Main Product Lines  | : Kitchenware, Serveware, Tableware, Cookware, Barware and Giftware  |
| Main Export Market  | : USA, Europe, The Middle East, South East Asia and Australasia.   |
| Business Award      | : • 4 times winner of "Outstanding Export Performance" award from 'All India Stainless Steel Industries Association' (AISSIA).<br>• Winner of "Best Exports" award from 'Engineering Export Promotion Council' (EEPC), India |
| Postal Address      | : 11/43 Yashwant Nagar, Goregaon West, Mumbai – 400 104, Maharashtra, India.   |
| Telephone No.       | : 0091 22 2872 2880  |
| Fax No.             | : 0091 22 2872 7152  |
| Mobile              | : 0091 9870 191 191 (Anand Baldawa)  |
| E-Mail              | : contact@seebagroup.com   |
| Website             | : www.seebagroup.com   |

## SHREE VALLABH METALS



|                                  |   |
|----------------------------------|---|
| Name of Managing Director        | : Mr. Shantilal B. Jain   |
| Name of Directors                | : Mr. Vimal B. Jain, Mr. Bharat B. Jain, Mr. Bhavesh S. Jain, Mr. Dhaval S. Jain, Mr. Alpesh M. Jain  |
| Name of Company                  | : <b>SHREE VALLABH METALS</b>   |
| Year of Established              | : 1975  |
| Type of Company                  | : Partnership   |
| Workers Team                     | : 150-200   |
| Nature of Business               | : Manufacturer & 100% Exporter of Stainless Steel Utensils & Cutlery. The Company is known for innovation and Creativity keeps coming up with many new products and designs on a regular basis. |
| Main Product line                | : Stainless steel House wares, Kitchenware, Cookware, Hot Pot, Tableware, Cutlery, Bar Accessories, Hotel ware, etc.  |
| Annual Production Capacity       | : 2500 Mt.  |
| Facilities Production Technology | : Double Action Presses & Lathe, Spinning, Wedding, Buffing and other small and ancillary machines, Circle cutting machine in House Tool Room etc.  |
| Average Annual Export            | : US\$ 6 Million.   |
| Main Export Markets              | : Middle East, U.A.E. Europe, Australia and North-Central & South America, Africa.  |
| Postal Address                   | : 17/21, Dr. Atmaram Merchant Road, Bhonabhari Building Bhuleshwar, Mumbai-400 002 India  |
| Telephone No.                    | : 0091 22 22403343  |
| Fax No.                          | : 0091 22 22413492  |
| Mobile                           | : 0091 9819208320   |
| Email                            | : bhavesh@shreevallabh.co.in / sapna123@vsnl.com<br>dhaval@shreevallabh.co.in<br>svmfactinfinite@mtnl.net.in  |
| Website                          | : www.shreevallabh.co.in<br>www.shreevallabhmetals.com / www.neelkanth.net  |



## GALAXY KITCHEN APPLIANCES



Contact Person : **MR. ROHIT / MR. NILESH**  
 Name of Company : **GALAXY KITCHEN APPLIANCES**  
 Radhesyam Society, Nr. Shitala Mataji Temple, Vil. Pardi, Tal. Lodhika, Dist. Rajkot.  
 Year of Established : 2012  
 Type of Company : Manufacturer Exporter  
 Workers Team : 12 Persons  
 Nature of Business : Cookwares  
 Main Product Lines : Aluminium Pressure Cooker  
 Annual Production Capacity : 300000 PCS.  
 Facilities Production Technology : Automation Technology  
 Now Production : Running  
 Average Annual Export : 210000 USD  
 Main Export Market : Sri Lanka, Gulf Country, European Country  
 ISO CERTIFY : Available  
 Postal Address : **CHARMY PRODUCTS**  
 Balaji Industrial Estate, Plot No.13, Nr. Murlidher Weigh Bridge, Manda Dungar, RAJKOT 360003  
 Mobile : +91 99252 20772 (Mr. Rohit)  
 +91 98256 20772 (Mr. Nilesh)  
 E-Mail : info@litexindia.com  
 Website : www.litexindia.com

## SAM GLOBALS



Ceo/MD/Dir./Contact Person : Mr. Kuldeep Mittal  
 Name of Company : Sam Globals  
 Year of Established : 2001  
 Type of Company : Proprietorship  
 Workers Team : 80  
 Nature of Business : Mfrs. and Exporters  
 Main Product Line : Bath Accessories, Houseware & Tableware, Bar Accessories And Hooks & Glass Shelves  
 Annual Production Capacity : 250 M. Tonnes  
 Facilities Production Tech. : OEM, (Matt, Shiny Finish), Etching, Hammering, Powder Coating and Printing, Ribs, Leatherite Work  
 Now Production : All Above  
 Average Annual Export : USD 2.5 Million  
 Main Export Markets : Europe, Middle East And All Gulf Countries  
 Postal Address : A-24, Pul Pehladpur, Suraj Kund Road, New Delhi-110044, India  
 Tel : + 91-11-26368280/81  
 Fax : + 91-11-66173891  
 Mobile : +91 - 9999313403 (Nakul)  
 E-mail : nakul@samglobals.com, exports@samglobals.com  
 Website : www.samglobals.com

## KOMAL TRADING CORP.



Md Contact Person : **Tekchand D. Bheda**  
 Name Of Company : **KOMAL Trading Corporation**  
 Year Of Established : 1985  
 Type Of Company : Mfgd & Trading  
 Nature Of Business : Stainless stell Utensile  
 Main Product Lines : Oil Dispenser  
 Annual Prod. Capacity (MT) : 40  
 Average Annual Export : To Murchant Export  
 Postal Address : B-12,Vaishali Induserial Estate  
 Mhatre Wadi, Dahisar West, MUMBAI 400068  
 Telephone No. : +91-022-22223333  
 Fax No. : +91-022-28926188  
 Mobile : +91-9820087177  
 E-Mail : komal@vsnl.com  
 Website : www.komalsteel.com

## JAGDAMBA CUTLERY PVT. LTD.



Md/Dir./CEO : **Mr. Pawan Kansal / Mr. Ankur Jain**  
 Name of company : **JAGDAMBA CUTLERY PVT. LTD.**  
 Year of established : 1984  
 Type of company : Private Limited  
 Workers team : 250  
 Nature of business : Manufacturing & Exporting  
 Main product lines : Stainless steel Cutlery, Kitchen tools, Kitchenware, Bar Items, Petware, Bathroom Accessories, Table ware & Gadgets  
 Annual production : 250-300 Tons/Month and 300 thousand Pcs/day  
**Facilities Production Technology:** Auto Polishing, Korean Technolgy, Hydraulic Machine, Power press Roller, Dumble polishing, Gold plating and sand blasting, Powder coating, Pvd coating, Etching, Laser, Ename, Hollow handle weldin, Butt welding, Nonstick coating, Pad printing, Lequire, Laser  
**Now production** : Stainless steel Cutlery, Kitchen tools, Kitchenware, Bar Items, Petware, Bathroom Accessories, Table ware & Gadgets  
 Average annual export : USD \$ 15.0 mil  
 Main export markets : America, Latin America, Western Europe, Middle East, UK, Russia, Brazil, Turkey etc.  
Business award if any :  
 1. National award for export excellence and quality products in the year 2005.  
 2. Award Winner from 8 consecutive year since 2006 for highest growth in exports from ministry of commerce & steel and their respective council.  
 Iso certify : ISO 9001-2008  
 Postal address : Plot No. 153 I&J, HSIIDC, Kundli(EPIP), Sonapat -131028 Haryana (India)  
 Telephone no. : +91 130 2374453-56  
 Fax no. : +91 130 2374452  
 Mobile : +91-8814811158  
 E-mail : manoj@jagdambafatware.com  
 Website : www.jagdambafatware.com

## SHREE SHAKTI ENTERPRISES PVT. LTD.



|                                  |  |
|----------------------------------|--|
| Name of Directors                | : Mr. Rakesh Bajaj / Mr. Rajiv Bajaj   |
| Name of Company                  | : SHREE SHAKTI ENTERPRISES PVT. LTD.   |
| Year of Established              | : 1997   |
| Type of Company                  | : Private Limited  |
| Workers Team                     | : 200  |
| Nature of Business               | : Manufacturers & Exporters  |
| Main Product Line                | : Stainless Steel Houseware, Kitchenware, Tableware, Barware   |
| Annual Production                | : 2500-3000 MT   |
| Facilities Production Technology | : Double Action Press Machines, Cutting Press, Spinning / Rolling Machine, Rolling Edge, Roll Cutting, Welding Machines, Matt/Satin Finishing and many others. |
| Now Production                   | : S. Steel, Aluminium & Copper Base Items.   |
| Main Export Markets              | : Canada, Europe, Nigeria, UK, USA etc.  |
| ISO Certify                      | : ISO - 9001:2008  |
| Address                          | : PLOT NO. 72, PHASE - IV, HSIIDC, KUNDLI, Distt. SONIPAT ( HARYANA )-131028   |
| Phone                            | : 0091-130-2219960/61/62   |
| Fax                              | : 0091-130-2219964   |
| Mobile                           | : 09311010996 (Rajiv Bajaj)<br>09310031695 (Rakesh Bajaj)  |
| E-mail                           | : exports@pnbutensils.com  |
| Website                          | : www.pnbutensils.com  |

## MOSAIC HOUSEWARE PVT. LTD.



|                                 |  |
|---------------------------------|--|
| Ceo/Md/Dir./Contact Person      | : VED PRAKASH  |
| Name of Company                 | : MOSAIC HOUSEWARE PVT. LTD.   |
| Year of Established             | : 2007   |
| Type of Company                 | : Private Ltd.   |
| Workers Team                    | : 80   |
| Nature of Business              | : Export / Import / Distribution                                       |
| Main Product Lines              | : Stainless Steel Houseware, Cutlery, Kitchen Tools                    |
| Annual Production Capacity (MT) | : 1200   |
| Average Annual Export           | : US\$ 1.5 Million   |
| Main Export Markets             | : South America, Europe, Far East.                                     |
| Postal Address                  | : E- 53, Sector 4, DSIIDC Industrial Area, Bawana, Delhi 110039, India |
| Telephone No.                   | : +91-11-27762594  |
| Fax No.                         | : +91-11-27762595  |
| Mobile                          | : +91-9810135003   |
| E-Mail                          | : info@mosaichouseware.com   |
| Website                         | : www.mosaichouseware.com  |



**CHANDA STEEL WORKS PVT. LTD.**

|                            |   |
|----------------------------|---|
| Contact Person             | : <b>Mr. Satish Jain / Mr Sidharth Jain</b>   |
| Name Of Company            | : <b>CHANDA STEEL WORKS PVT. LTD.</b>   |
| Year Of Established        | : 1999  |
| Type Of Company            | : Private Limited   |
| Workers Team               | : 150   |
| Nature Of Business         | : Manufacturer And Exporter of St. Steel Utensils, Houseware Products, Pet Products, Cutlery & Kitchen Tool |
| Main Product Lines         | : All Types Of S.s Houseware, Pet Products And Flatwares  |
| Annual Prod. Capacity (MT) | : 800MT   |
| Average Annual Export      | : USD 11 Million  |
| Main Export Markets        | : Europe, Usa, Australia, Japan, Canada   |
| Business Award If Any      | : STAR EXPORT HOUSE   |
| Postal Address             | : B-64/2 Wazirpur Industrial Area, NEW DELHI-110052   |
| Factory Address            | : 498, Phase-4, Hsidc Indl. Estate, KUNDLI, Sonapat (haryana)   |
| Telephone No.              | : +91-11-27375408/ 42475251   |
| Fax No.                    | : +91-11-27375409   |
| Mobile (With Person)       | : +91 9810078734 (Mr. Satish)<br>+91 9810240203 (Mr. Sidharth)  |
| E-Mail                     | : sidharth@cswpl.com, satish@cswpl.com,   |
| Website                    | : www.cswpl.com   |





## BHALARIA

*If you can draw it,  
we can make it.*



|                                    |  |
|------------------------------------|--|
| Name of Director                   | : MR. HITENDRA BHALARIA (Chairman, Houseware Penal, EEPC, India)   |
| Name of Company                    | : <b>BHALARIA METAL CRAFT PVT LTD</b><br>: <b>BHALARIA METAL FORMING</b>   |
| Business History                   | : Seven Generations in the trade.  |
| Type of Company                    | : Private Limited  |
| Nature of Business                 | : Sheet Metal Forming, Manufacture of Stainless Steel, Restaurant ware, House ware, Sales Promotional Products, Office and Bathroom Accessories. |
| Main Product Lines                 | : Stainless Steel Restaurantware, Houseware, Giftware, Sales Promotional Products, Office and Bathroom Accessories.                              |
| Annual Production                  | : 6,000 MT   |
| Current Production                 | : 3,800 MT (Approx)  |
| Average Annual Exports             | : 18 Million US\$ (Approx)   |
| Facilities / Production Technology | : Blanking, Deep Draw,. Shallow Draw, Rolling, Spinning, Trimming, Finishing, Tube & Bar Bending, Modern Tool Room etc.                          |
| Main Export Market                 | : North/South America, West/East Europe, UK, Australia, Japan, Gulf countries, China, Thailand, Malaysia, Philippines + 50 countries.            |

### BUSINESS AWARDS

- 1) 9 times winner of EXPORT EXCELLENCE award from EEPCINDIA Export Promotion Council for Highest Exports by Commerce Ministers;
- 2) "CERTIFICATE OF EXPORT RECOGNITION" by the Government of Maharashtra, in appreciation of export achievement for the year 2005-2006;
- 3) EXPORT EXCELLENCE Certificate by Export Promotion Council for Handicrafts (EPCH) in 2008;
- 4) Indian Stainless Steel Development Organisation (ISDO) Award 2010, for Excellence in Product Development and International Marketing;
- 5) "VYAPAR RATNA" (Business Gem) Award by the Stainless Steel Merchants' Association, Mumbai, in October 2007 on the occasion of its Golden Jubilee Celebrations;
- 6) UDYOG RATTAN AWARD' (Best Industrialist) by Institute of Economic Studies in 2007-08;
- 7) "RASHTRIYA UDYOG RATAN (Best National Industrialist) AWARD & CERTIFICATE OF EXCELLENCE" with Gold Medal from Indian Organisation for Business Research & Development in 2009;
- 8) 'GLORY OF INDIA AWARD' and GOLD MEDAL by Institute of Economic Studies in 2009;
- 9) MILLENNIUM EXCELLENCE AWARD' for Quality with Gold Medal from Economic Growth Society of India, New Delhi in 2009;
- 10) Award for the Best Unit in Mira Bhayander Industrial Area by the Mira-Bhayander Small Scale Industries Association for the year 2007;
- 11) 14 times winner of Best Design award, and Highest Exporter's Trophy from All India Stainless Steel Industries Association; And many other awards.

**COMPANY ADDRESS** : **BHALARIA METAL CRAFT PVT. LTD.**  
Bhalaria Industrial Premises, Bhalaria Road,  
Opp. Hindu Shmashan, Bhayandar (West) 401101,  
MUMBAI, Maharashtra.

Telephone # : +91 22 2819 8226/ 2819 8234  
Fax # : +91 22 28198227 / 2625 6526  
Email ID : [exports@bhalariametal.com](mailto:exports@bhalariametal.com), [sales@bhalariametal.com](mailto:sales@bhalariametal.com)  
Website : [www.bhalaria.com](http://www.bhalaria.com) & [www.bhalariametal.com](http://www.bhalariametal.com)





# BHALARIA

*if you can draw it, we can make it*



## BHALARIA METAL CRAFT PVT. LTD.

Bhalaria Rd , Opp. Hindu Shmashan, Bhayander (W), Mumbai. Dist. Thane, Maharashtra 401 101, India Tel : (91-22) 2819 8234, 2819 8226,  
Fax : (91-22) 2819 8227, 2625 6526, E-mail : sale@bhalariametals.com, exports@bhalariametals.com, Website : www.bhalaria.com , www.bhalariametals.com



# BHALARIA

*if you can draw it, we can make it*



## WHY BHALARIA?

- Advantage of wide and varied machineries and capability for different product range operations
- Consistent Quality
- 6500 Product Range to Offer, 500 OEM Products
- Service - small orders are also catered
- 100 products in one container can be shipped
- 9 times Export Excellence Award Winner from Govt.
- 14 times Design Award Winner
- Relationship Management, Value Partnership The Thoughts - of Bhalaria Team

See Company Profile on Page **32**





**Manufacturer & Exporter of Stainless Steel :-**  
Cutlery | Kitchenware | Hotelware | Holloware | Barware | Gifts & Promotion



**OUR MAJOR OVERSEAS BUSINESS ASSOCIATES**



**OUR MAJOR INDIAN BUSINESS ASSOCIATES**



Please visit us at :-

- Ambiente, Germany from 13th-17th Feb 2015 at booth E29, Hall No. 10.3
- IHGF, Delhi, INDIA from 20th-23rd Feb 2015 at Mart no. A12/34, Ground Floor.
- Chicago Houseware Show, USA from 7th-10th March 2015 at Booth no. S5036.
- Houseware Show, Delhi, INDIA from 15-18TH April 2015 at A12/34, Ground Floor.
- HK Houseware, HongKong from 20th-23rd April 2015 at 1C-A23.



Pawan Kansal (MD)

**National Award Winner**  
in export excellence and quality products in the year 2005.  
Award winner from 8 consecutive year since 2006 for the highest growth in exports from ministry of commerce & steel and their respective council.

**Jagdamba**  
CUTLERY PVT. LTD.

JAGDAMBA CUTLERY PVT.LTD.  
Factory / Show Room: Plot No.: 153 I&J&D,  
HSIDC Ind. Area EPIP Kundli, Haryana - 131028, INDIA  
Website - [www.jagdambafatware.com](http://www.jagdambafatware.com),  
Email : [info@jagdambafatware.com](mailto:info@jagdambafatware.com),  
[mano@jagdambafatware.com](mailto:mano@jagdambafatware.com)  
Contact Numbers -  
Tel.: +91 130 2374453, 2374454, 2374455, 2374456,  
Fax: +91 130 2374452 (Sales)  
Mobile no. : +91 9811178827 (Mr. Pawan Kansal)  
+91 9810789777 (Mr. Ankur Jain)



**5<sup>th</sup> INDIAN  
Stainless Steel  
Houseware Show**

**12 13 14  
JULY 2015**



**SAVE THE DATE**

Register you visit



**CHENNAI, INDIA**  
Chennai Trade Center, Tamilnadu

[www.inoxhousewareshow.com](http://www.inoxhousewareshow.com)

**Exhibition Product Categories**

- Utensils
- Cookware
- Kitchenware
- Kitchen tool & Cutlery
- Machinery & Accessories
- Tableware
- Petware
- Gift Items
- Raw Materials
- Restaurant & Hotel ware

**Organized & Promoted by:**  
**Steel Market Info**  
THE MAGAZINE DEVOTED TO STAINLESS STEEL AND ITS APPLICATIONS स्टील मार्केट इन्फो

2nd Floor, Nirmal Tower, Chopasani Road, JODHPUR - 342 003 (Raj.) INDIA  
Ph.: 0291-2441514, 2632533 • Mob.: +91-773-773-1015, 9314713809  
Email: [event@steelmarketinfo.com](mailto:event@steelmarketinfo.com) • Web: [www.steelmarketinfo.com](http://www.steelmarketinfo.com)